

PRELIMINARY ISSUE
THIS PLAN ISSUED FOR
ADVANCE INFORMATION ONLY

NAD 83 CENTERLINE ANGLE POINTS (BAR & ENTRANCE)

PT	X	Y
C-1	5936273.49	2172157.43
C-2	5938147.59	2171508.43
C-3	5940265.09	2170773.43
C-4	5943553.39	2166602.43
C-5	5944545.29	2166122.43
C-6	5945376.39	2165967.23
C-7	5946088.69	2166728.23
C-8	5946888.99	2167508.33
C-9	5947166.09	2168359.43
C-10	5948049.99	2169917.43
C-11	5948433.89	2170455.43
C-12	5949233.79	2171119.43
C-13	5950417.39	2171891.43
C-14	5951328.29	2172556.43
C-15	5952138.39	2173530.43
C-16	5952989.89	2174706.43
C-17	5953718.89	2180951.43
C-18	5956236.79	2183159.43
C-19	5957823.09	2186378.43
C-20	5958152.59	2187513.43
C-21	5958681.79	2187878.43
C-22	5959281.79	2188078.43
C-23	5959581.79	2189078.43

NAD 83 CHANNEL ANGLE POINTS (HUMBOLDT BAY BAR & ENTRANCE)

PT	X	Y	PT	X	Y
1	5936596.69	2173163.63	24	5959081.79	2187578.43
2	5938385.39	2172268.83	25	5958421.69	2187381.23
3	5940404.09	2171258.93	26	5958007.99	2186903.83
4	5943666.09	2169944.43	27	5958425.99	2183393.63
5	5944727.49	2168468.93	28	5958165.59	2181942.63
6	5945239.99	2166690.33	29	5958346.69	2181424.83
7	5945752.39	2165911.73	30	5958566.99	2180353.43
8	5946454.09	2165131.33	31	5958165.59	2174594.63
9	5946853.59	216479.53	32	5952300.39	2173413.53
10	5947831.69	2170042.13	33	5951516.79	2172459.53
11	5949193.09	2170679.33	34	5950526.69	2171724.13
12	5949124.59	2171287.03	35	5949343.09	2170952.03
13	5950308.09	2172059.13	36	5948674.79	2170232.13
14	5951141.79	2172853.23	37	5948301.49	2169794.33
15	5951976.39	2173548.23	38	5947989.59	2169234.23
16	5952816.79	2174808.43	39	5948007.49	2168781.23
17	5955484.79	2180520.43	40	5946431.39	2168537.23
18	5956047.79	2183225.33	41	5945672.89	2165162.43
19	5957638.19	2187055.43	42	5944554.09	2162524.63
20	5957883.59	2187647.53	43	5944363.09	2165776.33
21	5958881.79	2188978.43	44	5944441.39	2162611.63
22	5959581.79	2189078.43	45	5943125.19	2172287.33
23	5959681.79	2189578.43	46	5937908.79	2170746.43
			47	5936950.29	2171151.43

US Army Corps of Engineers
San Francisco District
450 Golden Gate Ave
San Francisco, CA 94102

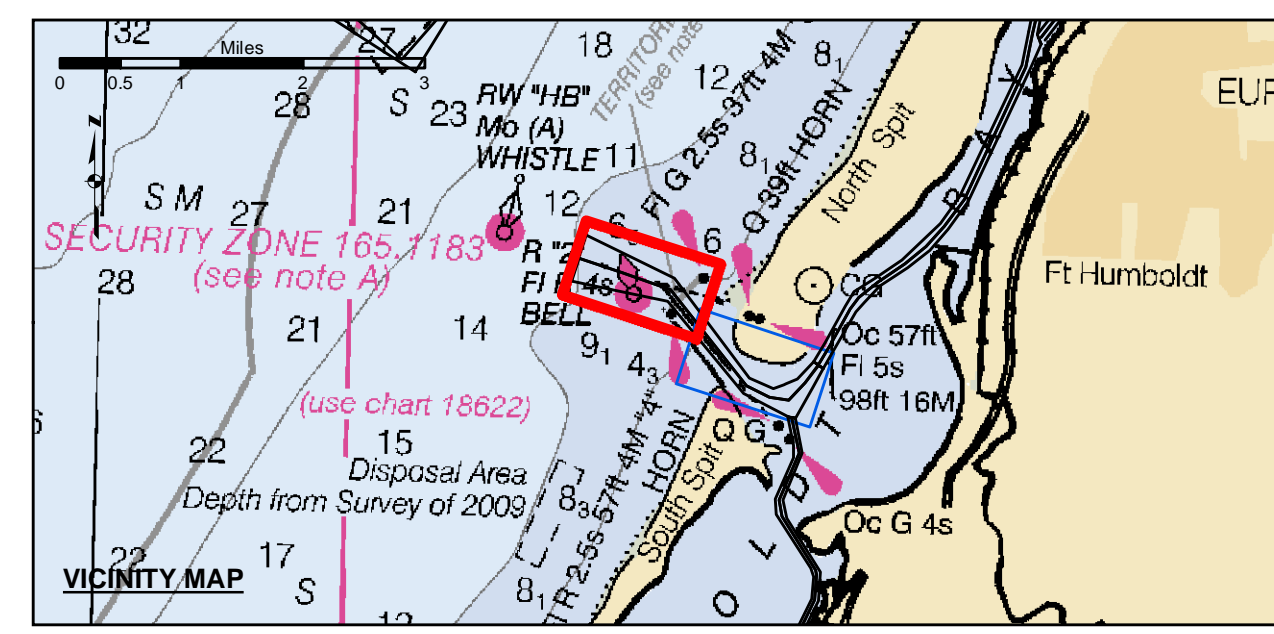
DISCLAIMER
The United States Government furnishes this information as a service to the public. It is not intended to be used for any purpose other than that for which it was prepared. The United States Government makes no warranty, expressed or implied, concerning the accuracy, completeness, or reliability of the information. The user assumes all liability for any use of the information. The United States Government is not responsible for any errors or omissions in this information. The user assumes all liability for any use of the information. The United States Government is not responsible for any errors or omissions in this information.

PREPARED UNDER THE DIRECTION OF
LT COLONEL KEVIN P. ARNETT
DISTRICT ENGINEER

Surveyed By:	Plotted By:	Checked By:	Drawn By:
Kevin P. Arnett	PDT	PDT	PDT
Submittal:	Hydro Survey Team Leader	Chief, Hydro Survey Section	Chief, Construction Branch
Chart Date:	Jun 06, 2022	Designed by:	PDT
Drawn by:	PDT	Drawn by:	PDT

CALIFORNIA
HUMBOLDT COUNTY
HUMBOLDT BAY BAR & ENTRANCE CHANNEL
CONDITION SURVEY
2-4 JUNE 2022

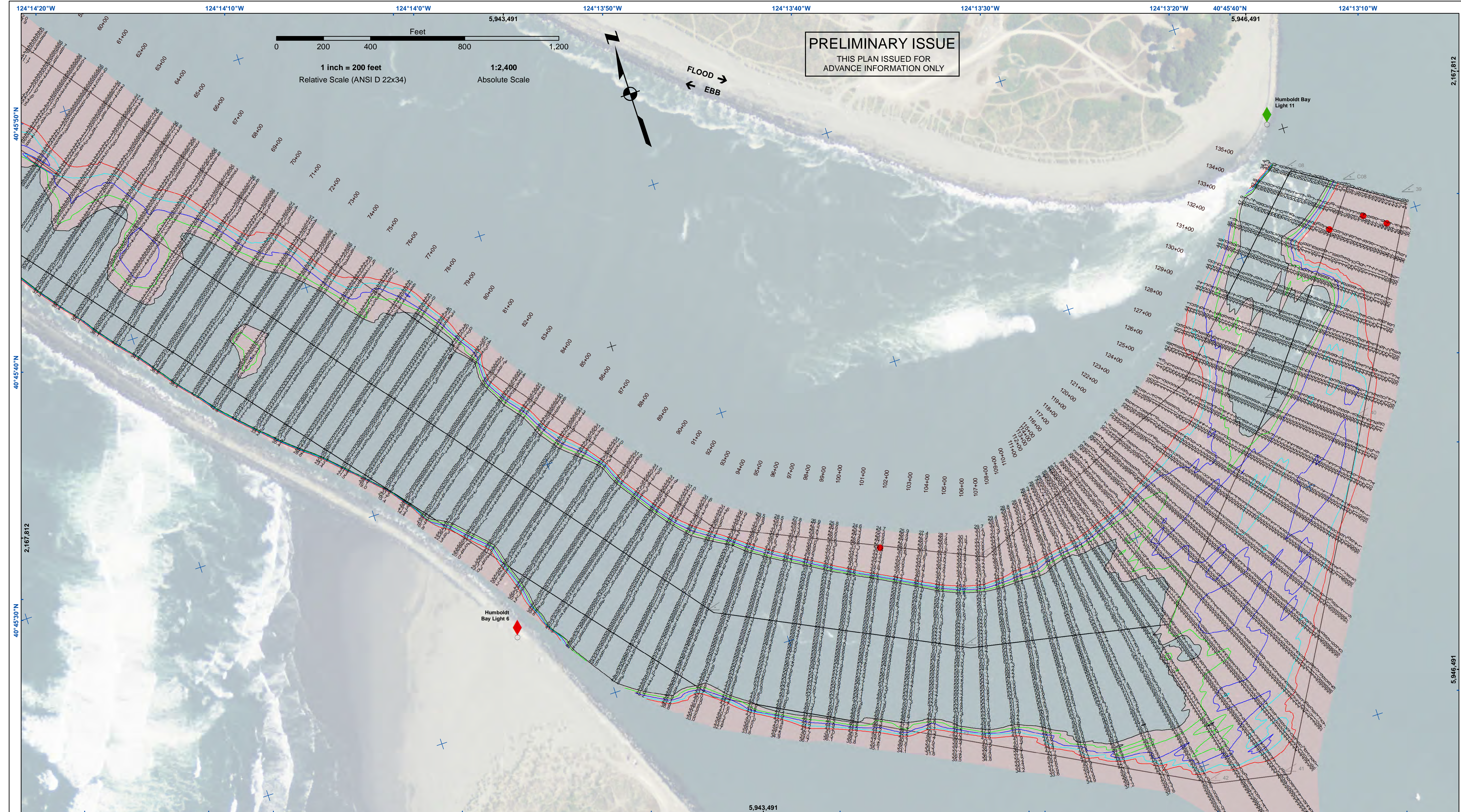
Sheet Number 1 of 2



- Federal Navigation Channel
- Shoaling Area
- Placement Area
- Anchorage Area
- Wreck Area
- Submerged Wreck
- Zone_I_Angle_Points
- Beacon, General
- Obstruction Point
- Navigation Buoy
- Navigation Buoy
- Shoalest Sounding*
- Contours**
- 48
- 47
- 46
- 45
- 44

NOTES:
DRAWINGS NOT TO BE USED AS NAVIGATION. ONLY CHANNEL CONDITION AT DATE OF SURVEY. THE LOCATION OF ALL NAVIGATION AIDS ARE BASED ON INFORMATION PROVIDED BY THE U.S. COAST GUARD. BUOY LOCATION REPRESENT THE POSITION OF THE SINKER ONLY.
SURVEYED BY THE CORPS OF ENGINEERS.
SOUNDINGS WERE TAKEN BY FATHOMETER AND ARE SHOWN TO THE NEAREST TENTHS OF A FOOT.
SOUNDINGS ARE BASED ON THE DATUM OF MEAN LOWER LOW WATER AT THE LOCALITY.
PLANE GRID AND COORDINATES ARE BASED ON THE STATE OF CALIFORNIA COORDINATE SYSTEM, LAMBERT CONFORMAL PROJECTION, ZONE 11 NAD 83, CALIFORNIA, AS DESCRIBED IN SPECIAL PUBLICATION NO. 235, PUBLISHED BY THE NATIONAL OCEAN SURVEY.
PROJECT DEPTHS ARE AS FOLLOWS:
BAR & ENTRANCE CHANNEL = 48 FEET
NORTH BAY, SAMOATO MILE 5.0 & = 38 FEET
EUREKA CHANNEL, FIELDS LANDING CHANNEL & MILE 5.0 TO "N" STREET = 26 FEET

1:00 INDICATES THE NUMBER AND BEGINNING OF A LINE OF SOUNDINGS.
SOUNDINGS ARE BASED ON TIDE GAUGES REFERENCED TO U.S.C. & G.S.
Vertical and Horizontal Control:
NOAA Station: 941 8767 - North Spit, CA
Benchmark:
NO 11 1940 (PID: LV0359)
MLW Elev: 4.251m
Title:
RTK GPS, using GEOID12a and VDATUM
RTK elevations calibrated at 10.0ft nail at Coast Guard Station Humboldt Bay
Position:
RTK Positions



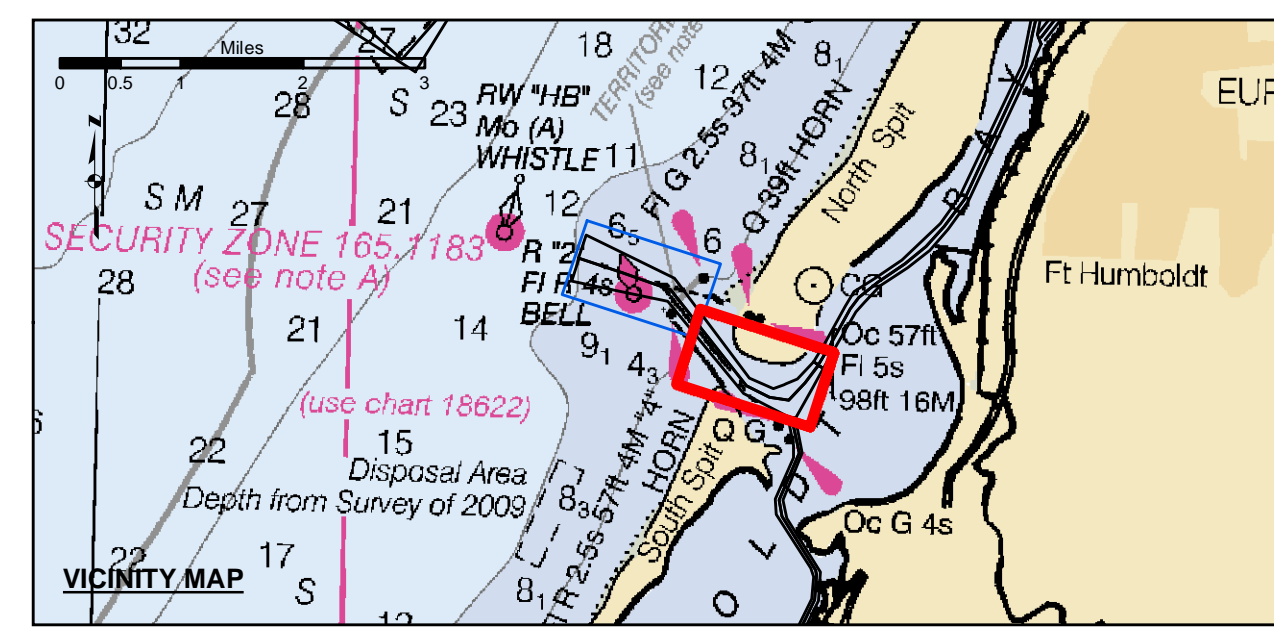
PRELIMINARY ISSUE
THIS PLAN ISSUED FOR
ADVANCE INFORMATION ONLY

5,943,491
0 200 400 800 1,200
1 inch = 200 feet
Relative Scale (ANSI D 22x34)
1:2,400
Absolute Scale

US Army Corps of Engineers
San Francisco District
450 Golden Gate Ave
San Francisco, CA 94102

DISCLAIMER
The United States Government furnishes this information as a public service and does not warrant, express or implied, the accuracy, completeness, or reliability of the data. The user is responsible for the results of any application of the data for other than its intended purpose. The user is responsible for the results of any application of the data for other than its intended purpose. The user is responsible for the results of any application of the data for other than its intended purpose. The user is responsible for the results of any application of the data for other than its intended purpose.

Prepared Under the Direction of	Chart Date	Jun 06, 2022
LT COLONEL P. ARNETT	Designed by:	
Submittal: Hydro Survey Team Leader	Plotted By:	PDT
Recommended: Chief, Hydro Survey Section	Checked By:	PDT
Approved: Chief, Construction Branch	Drawn by:	PDT



Federal Navigation Channel	Beacon, General	Contours
Shoaling Area	Navigation Buoy	-48
Placement Area	Navigation Buoy	-47
Anchorage Area	Shoalest Sounding*	-46
Wreck Area		-45
Submerged Wreck		-44
Zone_I_Angle_Points		

NOTES:
DRAWINGS NOT TO BE USED AS NAVIGATION. ONLY CHANNEL CONDITION AT DATE OF SURVEY. THE LOCATION OF ALL NAVIGATION AIDS ARE BASED ON INFORMATION PROVIDED BY THE U.S. COAST GUARD. BUOY LOCATION REPRESENT THE POSITION OF THE SINKER ONLY.
SURVEYED BY THE CORPS OF ENGINEERS.
SOUNDINGS WERE TAKEN BY FATHOMETER AND ARE SHOWN TO THE NEAREST TENTHS OF A FOOT.
SOUNDINGS ARE BASED ON THE DATUM OF MEAN LOWER LOW WATER AT THE LOCALITY.
PLANE GRID AND COORDINATES ARE BASED ON THE STATE OF CALIFORNIA COORDINATE SYSTEM, LAMBERT CONFORMAL PROJECTION, ZONE 17N, CALIFORNIA, AS DESCRIBED IN SPECIAL PUBLICATION NO. 235, PUBLISHED BY THE NATIONAL OCEAN SURVEY.
PROJECT DEPTHS ARE AS FOLLOWS:
BAR & ENTRANCE CHANNEL = 48 FEET
NORTH BAY, SAMOATO MILE 5.0 & = 38 FEET
EUREKA CHANNEL, FIELDS LANDING CHANNEL & MILE 5.0 TO "N" STREET = 26 FEET

1:00 INDICATES THE NUMBER AND BEGINNING OF A LINE OF SOUNDINGS.
SOUNDINGS ARE BASED ON TIDE GAUGES REFERENCED TO U.S.C. & G.S.
Vertical and Horizontal Control:
NOAA Station: 941 8767 - North Spit, CA
Benchmark:
NO 11 1340 (PID: LV0359)
MLW Elev: 4.251m
Tides:
RTK GPS, using GEOID12a and VDATUM
RTK elevations calibrated at 10.0ft nail at Coast Guard Station Humboldt Bay
Position:
RTK Positions

CALIFORNIA
HUMBOLDT COUNTY
**HUMBOLDT BAY
BAR & ENTRANCE CHANNEL
CONDITION SURVEY
2-4 JUNE 2022**

**Sheet
Number
2 of 2**